

### DETTAGLI

- 2 tasche
- 1 tasca sul retro
- Elastico e coulisse

### TAGLIE

XS ÷ 4XL  
Slim Fit

### TESSUTO

100% cotone  
200 g / m<sup>2</sup>

### COLORE

C07 Lilla chiaro  
D24 Arancio  
Z46 Fucsia

### COLORE

C09 Pistacchio  
U38 Bluette



Le misure indicate si riferiscono alle taglie **S** per i capi femminili, **L** per i capi maschili. Per i capi a taglia unica le misure indicate sono effettive.

Il pantalone Pitagora presenta tasche laterali a sacco, una tasca sul retro e un elastico da 4 cm con coulisse in tinta e puntelli plastificati. Realizzato in una fresca e morbida gabardina 100% cotone, si abbina perfettamente con le casacche Gary e Jason.

### COLORI DISPONIBILI



C07 Lilla chiaro



D24 Arancio



U38 Bluette



Z46 Fucsia



C09 Pistacchio

TABELLE TAGLIE  
E CORRISPONDENZE

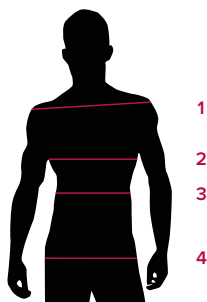


TABELLA ST-P2 SLIM FIT										
TAGLIA	XXS	XS	S	M	L	XL	XXL	XXXL	4XL	5XL
1 - SPALLE										
2 - TORACE										
3 - VITA	68-72	73-77	78-82	83-87	88-94	95-101	102-108	109-115	117-123	124-129
4 - BACINO	87-91	92-95	96-99	100-103	104-108	109-114	115-120	121-126	127-133	134-139

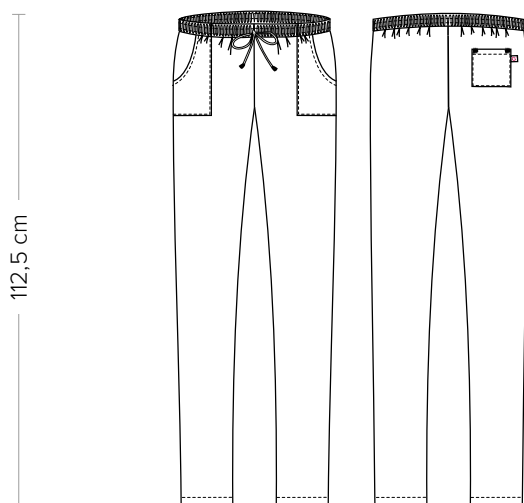
**GUIDA ALLE TAGLIE** **1)** Prendere le misure anatomiche (corpo con abbigliamento intimo) senza stringere mantenendo ben teso il metro. **Nota:** nel caso vogliate indossare dei camici già con dell'abbigliamento sotto prendete le misure già abbigliati. **2)** Nel caso tra le misure prese vi fosse una misura a cavallo fra 2 taglie vi consigliamo di prendere quella più grande. **3)** Le misure della tabella sono espresse in centimetri.

# PITAGORA

ITEM CODE

**COD. Q3P00246**

**Giblor's**  
italian work/life specialist



### DETAILS

- 2 pockets
- 1 rear pocket
- Elasticated waistband with drawstring

### SIZES

XS ÷ 4XL  
Slim Fit

### FABRIC

100% cotton  
200 g / m<sup>2</sup>

### COLOURS

C07 Light lilac  
D24 Orange  
Z46 Fuchsia

### COLOURS

C09 Pistachio  
U38 Royal



The measures indicated refer to sizes **S** for women, **L** for men. For one-size-fits-all garments, the measurements indicated are effective.

The Pitagora trousers have side sack pockets, a back pocket and a 4 cm elastic with matching drawstring and plasticized progs. Made in a fresh and soft 100% cotton gabardine, it goes perfectly with the Gary and Jason jackets.

### AVAILABLE COLOURS



C07 Light lilac

D24 Orange

U38 Royal

Z46 Fuchsia

C09 Pistachio

SIZE TABLES  
AND CORRESPONDENCES

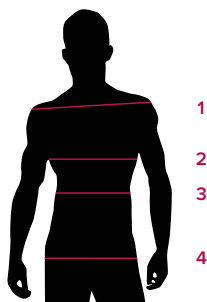


TABLE ST-P2 SLIM FIT

SIZE	XXS	XS	S	M	L	XL	XXL	XXXL	4XL	5XL
1 - SHOULDERS										
2 - CHEST										
3 - WAIST	68-72	73-77	78-82	83-87	88-94	95-101	102-108	109-115	117-123	124-129
4 - HIPS	87-91	92-95	96-99	100-103	104-108	109-114	115-120	121-126	127-133	134-139

**SIZE GUIDE** **1)** Take the anatomical measurements (body with underwear) without tightening, keeping the measuring tape taut. Note: in case you want to wear of the gowns already with the clothing underneath take the measurements already dressed. **2)** If there is a measure between 2 sizes between the measurements taken, we advise you to take the bigger one. **3)** The measurements in the table are expressed in centimeters.